

**How to Cite:**

Vijayalakshmi, T. M., Thenmozhi, P., Pandi, M., Sankar, R., Sivagami, L., & Thiagarajan, R. (2022). An ensemble approach on predicting blood platelets using supervised approach via computational bio informatics. *International Journal of Health Sciences*, 6(S8), 3867–3878. <https://doi.org/10.53730/ijhs.v6nS8.13010>

## **An ensemble approach on predicting blood platelets using supervised approach via computational bio informatics**

**Dr. T M Vijayalakshmi**

Assistant Professor, Dept. of Medical Biochemistry, University of Madras, Taramani Campus, Chennai  
Email: [proftmvijayalakshmi@gmail.com](mailto:proftmvijayalakshmi@gmail.com)

**P. Thenmozhi**

Assistant Professor, Department of CSE, Kongunadu college of Engineering and Technology  
Email: [thenmozhihanigandan96@gmail.com](mailto:thenmozhihanigandan96@gmail.com)

**Dr. M. Pandi**

Associate professor, Dept. of CSE, Dr. Mahalingam college of Engineering and Technology  
Email: [mpandi123@gmail.com](mailto:mpandi123@gmail.com)

**Sankar R**

Assistant Professor, Dept. of MCA, S.A Engineering College  
Email: [sankar@saec.ac.in](mailto:sankar@saec.ac.in)

**Dr. L. Sivagami**

Assistant Professor/ECE, Sriram Engineering College  
Email: [sivagamil.ece@sriramec.edu.in](mailto:sivagamil.ece@sriramec.edu.in)

**Dr. R. Thiagarajan**

Dept of IT, Prathyusha Engineering College  
Email: [rthiyagarajantpt@gmail.com](mailto:rthiyagarajantpt@gmail.com)

**Abstract**---Platelets are little leukocytes that are essential for such blood coagulation. When an individual does not generate sufficient platelets they won't function effectively, then they will likely to have frequent haemorrhage and bruising since normal deterioration towards the exterior of blood vessels can go inoperable. This may be prescribed to accommodate patients using platelet transfusions via blood donors to halt such haemorrhage. Unfortunately, such medication is not optimal since patients develop antigens against given blood platelets, preventing them from being managed with

platelets of similar blood groups in the future. As a result, blood centres are looking towards finding alternatives to donor platelets. Platelet transplants are commonly utilised to reduce or eliminate haemorrhage in a range of patient groups, including those that are currently haemorrhage and those who have malfunctioning or inadequate platelets. Because of the unpredictability of demands, commodity highly perishable, and cost, all institutions and health centres must prioritise estimating hospital-wide platelet consumption. Also, with fast advancement of ML technology, now it is extensively applied in the treatment of a variety of disorders. The benefit of machine learning methods is how they can interpret high-order range of predictor correlations and produce more solid predictions. The objectives of this approach are to employ the ensemble way of approach in machine learning algorithms using a clinical record to predict platelet count occurrence.

**Keywords---**platelets, blood coagulation, machine learning algorithms, haemorrhage.

## **Introduction**

### **Motivation**

In typical medical care, a standardized characteristic is examined tests. These are in charge of platelet aggregation and tissue regeneration, thrombus development and other biochemical processes formation, which is important in stroke as well as heart disease attacks. Platelets are very active entities that may react in a variety of ways. pressure, temperature change, and other external factors or pharmacological substances with a range of geometrical configurations alterations in the structure of their cellular membrane. Machine learning (ML) is a field of research which aims to give devices the potential to understand and develop while having to be expressly developed. This is described as such collection of information, that entails taking data and knowledge from this. Machine learning approaches strive to improve precision, boost efficiency, also play a significant role in the development of self-learning systems. ML algorithms may be used in a broad range of applications, with learning approaches like as unsupervised, supervised, semi-supervised, and reinforcement learning handling the many kinds of technologies.

The goal is to show how machine learning may be used to show effect on blood platelets respiratory diseases as well as other disorders. The parameter in a supervised learning technique ought to be forecasted from such a number of distinct factors. To use these parameters, define a program that translates entries to expected output. Classifier, which would be the categorization of data points or predictor data, with regression, which would be the prediction of patterns in labelled data to identify potential results, seem to be the main fundamental components of supervised learning. Regression, Logistic Regression, Random Forest, KNN, Linear Regression, and support vector machines are types of supervised methods. Plasma is a bodily fluid that carries nutrients, oxygen, and

debris away from the body. The typical human adult's blood volume has been more over 5-6 litres. Plasma, RBC, WBC, as well as platelets are indeed the four key phases of blood, which lead to different results such as ventricle where it is pumped towards the blood to the lungs, forming clots to protect excessive bleeding, transporting cells as well as immune cells which cause infections, hauling waste materials here to liver and pancreas, and maintaining homeostasis.

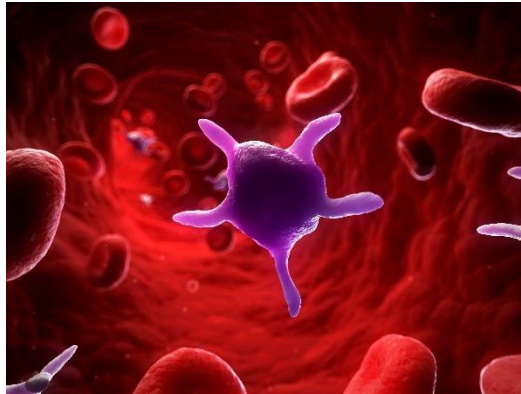


Figure 1: Blood Platelet Structure (©www.veryhealth.com)

Complete plasma is a combination of around 55 % serum, and that is the fluid part of the circulatory system, a liquid, proteins, cholesterol, glucose, and sodium which flows through capillaries, artery, and blood vessels. Several situations, including such excessive physically or emotionally strain, nicotine, pregnancies, or perhaps even excessive exercise, can cause blood cell abnormalities and changes in haematological parameters. Nicotine, one of most dangerous cigarette chemicals could change the usual rate of such indicators, such as RBC, WBC, and haemoglobin concentration. Changes in the characteristics may increase the risk of cholesterol, malignancy, immunological illnesses such as hypotension mellitus, pulmonary disease, and/or coronary heart disease. Aged, culture, nutrition, heredity, and gender all impact haematological parameters, which are closely controlled features having major clinical value. Machine learning (ML) technology uses a portfolio of mathematical and statistical tools to deliver complicated decision-making procedures. Within fields such as medical diagnostics, data processing, and forecasting, this has shown to be a valuable technique. For every patient, the system is given a set of input data and an outcome assessment. An optimal way to differentiate between both the 2 categories could then be determined using an algorithm.

### **Related Works**

Predicting thrombus formation in pathogenic streams, suggested in 2022, enables for risk assessment within patient-specific medicinal, haematological, and circulatory parameters where Kaushik N. Shankar, proposed the model. The author created a 3D multi - resolution model for analysing thrombus formation in the presence of collagen with tissue component on such a spatially defined surface. A Neural Network that reports for platelet signalling, a Lattice Kinetic Monte Carlo simulation for monitoring platelet locations, a Finite Volume Method

simulation tool for trying to resolve convection-diffusion-reaction formulae trying to describe stimulatory discharge and transit, as well as a Lattice Boltzmann stream method for solving for calculating the blood circulation field and over increasing thrombus make up the multiresolution structure. The ability to properly describe thrombus formation in stenotic flows needed increased thrombin binding at psychopathically high strain rate. In general, the method enables for the forecasting of thrombotic events to take into account patient-specific platelets signalling with capillary morphology.

Yisong Cheng (2021) derived that following surgeries, acute uncomplicated thrombocytopenia is a frequent haematological consequence. The focus of this research was to create and evaluate the effectiveness of 7 machine learning (ML) models for detecting people in danger of HAT following surgery. A derivation collection upto 70% and a testing dataset upto 30% were allocated randomly to each individual. During the learning, cross-validation was utilized to assess the hyper - parameters of ML techniques. Within derivation set, there is a procedure where the specificity, precision, and area under curve were all calculated after the ML algorithms were created. To assess the choice, the curve (AUC) and positive contribution were determined. In the testing dataset, the effectiveness of ML models was evaluated.

Puneet (2020) introduced the classified approach for the diseases caused by the abnormal development and proliferation of abnormal growth caused by the formation of a sizable proportion of malignant growth. The goal of this study is to improve lung cancer prediction by employing machine learning approaches set of common blood markers. For feature extraction, several matplotlib methods were utilised, and only certain characteristics that are significant for our models were chosen. We discovered with XGBoost with the GridSearchCV classification algorithm is the best fit for this application.

Deepti Bahel (2017) evaluated the performance of unexplored machine learning methods in order to aid in the forecasting of donating blood. We create models on grouped data sets utilizing k-means grouping even without grouping to evaluate if grouping improves productivity considerably. The rationale for this study is that plasma consumption is steadily growing necessity for transfusions as a result of the damage, operations, and illnesses, among other things. Medical practitioners may use reliable blood bank forecasting to forecast the future circulatory system and prepare appropriately to encourage voluntarily blood products to satisfy need. The greatest test set responsiveness (98.4%) was achieved in an SVM clustering model, that outperformed previous investigations.

Heiko Neeb introduced the study on (2004) medical method is fascinated by platelet aggregation and cell membrane dynamics. The study examines if basic geometrical characteristics extracted from platelets examined utilizing conventional light imaging methods may be used to forecast platelet shapeshift. The relevant metrics, including such size or perimeter, are employed as input for classification algorithm of a global growth factor rating as well as the dispersion of pseudopodia. These are also a dramatic indicator of cell membrane alterations that are usually linked with platelet aggregation. The findings reveal that both

phenotypes may be anticipated with high precision in unknown compounds, proving the utility of computerized platelet characterization in clinical settings.

### **Contribution and Organization of Paper**

Hemostasis, Inflammatory, as well as tissue regeneration are all linked by Coagulation Factors. These adapt in milliseconds to precise signals created by tissue damage or pathogenic infection. Platelets are first capillary corpuscles that gather at a location of arterial wall injury as well as the tissues that surrounds it. Platelets are activated when they are stimulated. Cells generate sticky protein receptors, which assemble and produce a variety of cytokine as well as other agents. Epithelial cells, leucocytes, monocyte, and lymphocytes all come into interacting directly with active platelets. By platelets can either enhance or inhibit the functioning of other cellular components in inflammatory when they come into touch with them which promote leukocyte transendothelial movement into adjacent tissue. Complete plasma is a combination of around 55 % serum, and that is the fluid part of the circulatory system, a liquid, proteins, cholesterol, glucose, and sodium which flows through capillaries, artery, and blood vessels.

The goal is to show how machine learning may be used to show effect on blood platelets respiratory diseases as well as other disorders. The parameter in a supervised learning technique ought to be forecasted from such a number of distinct factors. Platelets are crucial in the development of thromboembolic events. Antiplatelets are the foundation of treatment in such illnesses, and new indications of a link among platelet hypersensitivities are figured prominently. Platelets play a critical part in the pathogenesis of thrombotic episodes are a kind of thrombosis that occurs when in recent years, there's been a significant focus in cell density materialised. The most often used metric is mean platelet volume (MPV). Platelet size is a characteristic that has been linked to both platelets responsiveness and clinically atherothrombotic risk events. Platelets that are stronger have an increased respiration and metabolic activity active, indicating that it has a higher prothrombotic potential. Large platelets are thus greater likely to be reticulated.

### **Methodology**

#### **Database**

A platelet count cell is a vital test that healthcare providers frequently order to assess a patient's health. Red blood cells (RBC), white blood cells (WBC), and platelets are the three main types of tissues that make up plasma. RBCs, or blood platelets, are most prevalent type of blood cells, accounting for 40-45 percent of all lymphocytes. White blood cells also called as thrombocytes are mostly in vast quantity in blood. WBCs, also referred as leukocytes, make up less than 1% of all lymphocytes. RBCs transport oxygenation to our body 's tissues, and the quantity of RBCs determines the supply of oxygen delivered to those tissues. WBCs combat diseases, whereas platelets aid in blood coagulation. Image categorization and object recognition technologies are getting increasingly effective and reliable as machine learning methodologies advance. As a consequence, technologies machine learning algorithms are used in a variety of sectors.

Deep learning methods are used in a variety of medical purposes, including anomaly identification and localized in chest X-rays, automated left ventricle fragmentation in myocardial MRI, including retinopathy diagnosis in multiparametric imagery. Segmentation process is the grouping of images with comparable properties into a particular unit. Each image is partitioned so that it can be displayed in a more significant manner, making it easier to evaluate. Because we will be referencing to various cells in a blood culture, our approach employs image fragmentation. Next will use segmentation to separate the image backdrop from the cells such that we only receive the single nucleus in front of the image. Image segmentation would also aid in distinguishing distinct cell nuclei forms. The field of view is reverted to its natural hue, while the backdrop is plain.

The clinical studies were adjusted to get a median of standard deviation of one point. The algorithms were effective in diagnosing the patients related to the performance indicators (AUC, sensitivity, and specificity) criteria. The extracted features differ from approach to techniques, as do the performance level. Despite the reality so both random forest with additional trees are ensemble models set of decision trees method, they are not always the same. This is the preliminary stage of our present scheme, where data pre-processing has indeed been identified as a crucial part of supervised ML algorithms generalisation performance. Following data cleaning, additional pre-processing was performed to eliminate outliers. The Median Relative Deviation was employed (MAD)-based anomalous disposal, that also excluded specimens that differentiated by more than standard deviations. These standard deviations from the variable's median value carries throughout the dataset.

### **Approach**

Several machine learning methods have been utilised in various categorization areas and also have obtained the best forecasting results due to its capability to combine the advantages of numerous different techniques toward a more sophisticated framework using different techniques. In comparison to a singular ML method, to increase generalization ability and durability. True positive (TP), true negative (TN), false positive (FP), and false negative (FN) performance indicators are calculated using confusion matrix values (FN). The examples of TP and TN occur when the actual category is accurately anticipated. FP and FN, on either side, are examples as to when the model inaccurately anticipated the actual class. The receiver operating characteristic (ROC) curve (also known as AUC) shows the relationship among true positive (TP) and false positive (FP) rates, with the x-axis representing FP and the y-axis representing TP. The AUC indicates how well the model distinguishes among its two classifications.

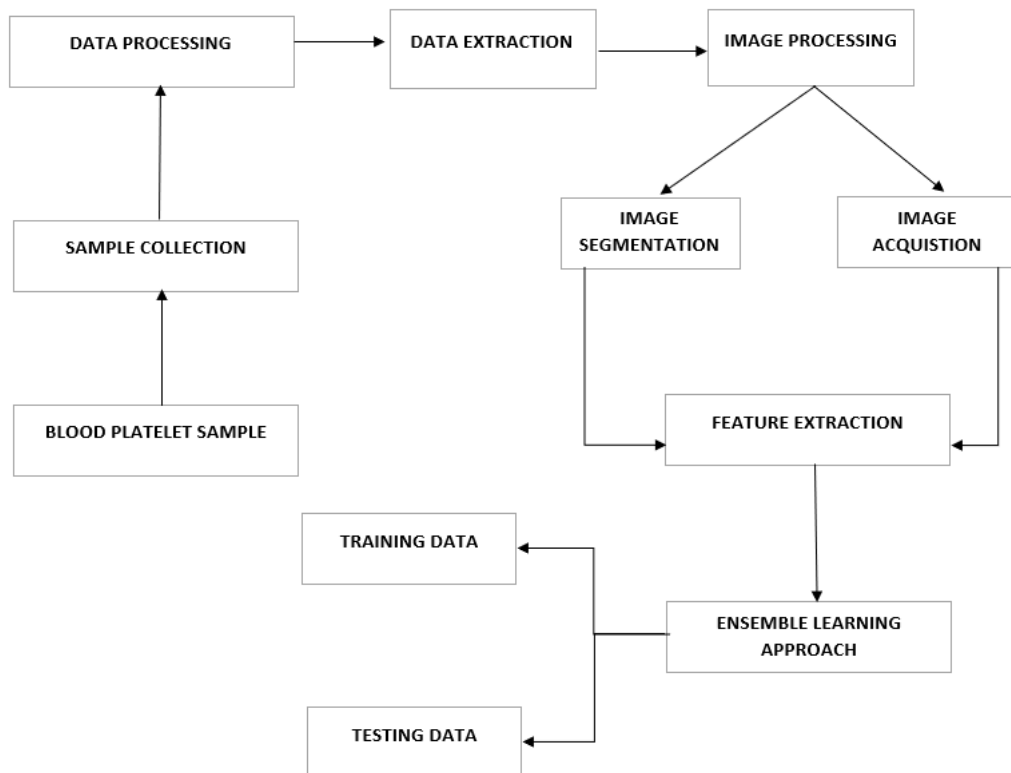


Figure 2: Proposed Architecture Diagram

The greater the AUC, the stronger. The research proved the importance of using AUC as a number of metrics for evaluating performance of the classifier. Clinical recommendations performed with using machine learning techniques in health settings could have an impact on patients' survival, in addition to numerous codes of ethics implications. As a result, prediction models which are both reliable and easily understandable are all in immensely popular in such applications. In the health sector, modelling interpretability relates to the capability of health providers to comprehend how well the model utilizes incoming information to produce prediction, to check predictive modelling prior reacting on it, and to justify treatment choices depending on the ML algorithm. In addition, because to the rapid growth of machine learning technology, it is currently utilized in the treatment of a wide range of illnesses.

$$\text{True Positive Rate (TP)} = \text{TP} / (\text{TP} + \text{FN})$$

$$\text{Precision} = \text{TP} / (\text{TP} + \text{FP})$$

$$\text{False Positive Rate (FP)} = \text{FP} / (\text{TN} + \text{FP})$$

Machine learning approaches have the advantage of being able to comprehend high-order predictive associations and deliver more accurate predictions. The goals of this strategy are to use an ensemble classifier in machine learning techniques to forecast platelet count incidence using a medical history. The suggested predicting model's main focus were primarily due to the use of an

ensemble modelling plan that involves use of the strengths of a variety of different classifications before layering their projections. Because variety is the fundamental guiding force for capturing the internal mechanism of training examples, ensemble learning is especially effective, resilient, and adaptable in their effectiveness. Layering is a learning ensemble system that incorporates numerous categorization techniques to create a specific dataset. A layering model's structure is composed of several tiers. The baseline level's forecasts are utilised as characteristic parameters to the second layer. This is advised that initial level of a reliable layering models be built using methods with distinct forecasting methodologies. Despite the reality how both random forest as well as additional trees are ensemble models set of decision tree method, but are not always the same. The primary approach differs within the randomized forests purposive sampling techniques the information with replacements.

### Results and Discussions

Using the ensemble learning algorithm, the platelets count attained from the datasets generates the different type of mechanism using the deep learning approach. This approach ensures the specificity, selectivity and the overall performance to improve the effectiveness and reliability in the precise results. As the results are improvised, these can be used to identify and diagnose the level of disease ailments in the patient's health condition. If there is any deterioration in platelet count, the analysis diagnosis that the patient's condition is in critical state.

Age group	Platelet Counts			
	<15,000	15-50,000	51 – 1.5L	>1.5L
0-1	8.4%	26%	34%	34%
2-5	0%	28%	28%	45%
6-10	13%	33%	40%	17%
11-15	0%	28%	28%	45%
15-30	11%	35%	44%	22%
31-50	0%	28%	28%	45%

Table 1: Platelet counts Range

Complete plasma is a combination of around 55 % serum, and that is the fluid part of the circulatory system, a liquid, proteins, cholesterol, glucose, and sodium which flows through capillaries, artery, and blood vessels.

Year	Survey	Description	Potential Limitations
2022	Predicting Thrombus Formation	A Lattice Kinetic Monte Carlo Simulation for Monitoring Platelet Locations	Cost and Expensive
2021	Acute Uncomplicated Thrombocytopenia	Effectiveness Of 7 Machine Learning (ML) Models for Detecting People	Tedious and Time Consuming
2020	To Improve Lung Cancer	XGBoost With the	Reliability issue

	Prediction	Gridsearchcv Classification Algorithm	
2017	Forecasting Of Donating Blood	SVM Clustering Model	Instability in Comparison
2004	Platelet Aggregation and Cell Membrane Dynamics	Classification Algorithm of Global Growth Factor Rating	Efficiency Improvement Needed

Table 2: Survey on Platelet Blood Parameters

## Analysis

Platelets serve an important role system, connecting hemodynamic stability, thrombosis, inflammatory, microbial clearing, and tissue regeneration: a conceptual illustration. An increasing amount of research suggests that platelets have a role other than blood coagulation and thrombosis. Several platelet interactions in the immune response have been modelled. Platelets check for harmful impulses and respond in accordance. Platelets detect and respond to different signals created by body in dangerous conditions. Platelets are activated by infections, vascular endothelium damage, and large particles contact. Platelet activation causes a variety of reactions, along with the stimulation of numerous inflammatory and clotting mechanisms.

Platelets get stimulated at locations of infections or tissue destruction. Platelets and thrombin conciliators help to stop haemorrhaging, clarity microbes explicitly or implicitly by trying to act on different stages of the inflammatory system, and try driving capillary fixing by offering matrix basic components and a plethora of transmissions that major renovation composite, encourage cellular neural stem cells, and regenerate the venous chassis Platelets could be activated by signal transmitted during inflammatory and thrombosis. By platelets can either enhance or inhibit the functioning of other cellular components in inflammatory when they come into touch with them which promote leukocyte transendothelial movement into adjacent tissue.

Ensemble learning is a machine learning technique in which multiple models are trained to solve the same issue and then integrated to get better results. Weak learners could be used to construct new concepts. Through combining numerous models, users may create more complicated structures. Almost all of the while, those fundamentals models need not function effectively on their own, whether as they include far too much biases or and they're too complex. To just be robust, there must be a great deal of variance. The idea of ensemble approaches is to strive to minimise by combining multiple learning algorithm to generate a training set, we may reduce the variance of these ensemble learning with greater results.

## Conclusion and Future Work

Medical recommendations performed in healthcare institutions with aid of ML algorithms may have an impact on individuals' life, in contrast to certain other ethical responsibilities. As a result, it is critical in such situations to have forecasting model which are both reliable and interpretable. As in healthcare arena, model applicability states that health care professionals can comprehend

how the models utilise system parameters to produce predictions, how they can validate predictive modelling prior reacting upon those, as well as how they can justify treatment choices depending on the ML model. As a result, probabilistic reasoning component significance estimations are critical both for understandability and resilience of forecasting analytics. The ensemble learning model's efficacy and accuracy in identifying blood platelets are proved by contrasting the findings to original condition research using an openly accessible dataset. The suggested predictive main focus was mostly due to the use of an ensemble modelling strategy that takes use of the strengths of a variety of classifications before merging the forecasts through layering. Because variety is the fundamental core principle for capturing the internal mechanism of training phase, ensemble learning is exceptionally successful, resilient, and diverse in overall effectiveness.

## References

1. A. El Amrani, É. Paradis, D. Danovitch and D. Drouin, "A Study of Low-Cost Sequential Electroplating Bumping Process and its Metallurgical Behavior," in *IEEE Transactions on Components, Packaging and Manufacturing Technology*, vol. 10, no. 5, pp. 917-923, May 2020, doi: 10.1109/TCPMT.2020.2978432.
2. A. L. Oldenburg, G. Wu, D. Spivak, F. Tsui, A. S. Wolberg and T. H. Fischer, "Imaging and Elastometry of Blood Clots Using Magnetomotive Optical Coherence Tomography and Labeled Platelets," in *IEEE Journal of Selected Topics in Quantum Electronics*, vol. 18, no. 3, pp. 1100-1109, May-June 2012, doi: 10.1109/JSTQE.2011.2162580.
3. A. Oseev et al., "Assessment of Shear-Dependent Kinetics of Primary Haemostasis with a Microfluidic Acoustic Biosensor," in *IEEE Transactions on Biomedical Engineering*, vol. 68, no. 8, pp. 2329-2338, Aug. 2021, doi: 10.1109/TBME.2020.3031542.
4. A. Santorelli and M. O'Halloran, "Patient-Specific Debye Parameters for Human Blood," 2019 41st Annual International Conference of the IEEE Engineering in Medicine and Biology Society (EMBC), 2019, pp. 238-242, doi: 10.1109/EMBC.2019.8856388.
5. A. Shah, S. S. Naqvi, K. Naveed, N. Salem, M. A. U. Khan and K. S. Alimgeer, "Automated Diagnosis of Leukemia: A Comprehensive Review," in *IEEE Access*, vol. 9, pp. 132097-132124, 2021, doi: 10.1109/ACCESS.2021.3114059.
6. A. Shamloo and F. Y. Parast, "Simulation of Blood Particle Separation in a Trapezoidal Microfluidic Device by Acoustic Force," in *IEEE Transactions on Electron Devices*, vol. 66, no. 3, pp. 1495-1503, March 2019, doi: 10.1109/TED.2018.2889912.
7. B. Neculaes, A. L. Garner, S. Klopman, C. A. Morton and A. S. Torres, "A Multi-Donor Ex Vivo Platelet Activation and Growth Factor Release Study Using Electric Pulses with Durations Up to 100 Microseconds," in *IEEE Access*, vol. 9, pp. 31340-31349, 2021, doi: 10.1109/ACCESS.2021.3060443.
8. C. Ciobanu et al., "Potential of Raman Spectroscopy for Blood-Based Biopsy," in *IEEE Instrumentation & Measurement Magazine*, vol. 25, no. 1, pp. 62-68, February 2022, doi: 10.1109/MIM.2022.9693451.

9. C. Ma et al., "A Computational Model of Thrombus Growth Based on Level Set Method," in *IEEE Access*, vol. 9, pp. 100769-100780, 2021, doi: 10.1109/ACCESS.2021.3091556.
10. H. Li, X. Zhao, A. Su, H. Zhang, J. Liu and G. Gu, "Color Space Transformation and Multi-Class Weighted Loss for Adhesive White Blood Cell Segmentation," in *IEEE Access*, vol. 8, pp. 24808-24818, 2020, doi: 10.1109/ACCESS.2020.2970485.
11. J. Castle et al., "Hematopoietic Stem Cell and Fibroblast Proliferation Following Platelet Electrostimulation," in *IEEE Access*, vol. 6, pp. 56395-56401, 2018, doi: 10.1109/ACCESS.2018.2872930.
12. K. Mukund, K. Mathee and S. Subramaniam, "Plasmin Cascade Mediates Thrombotic Events in SARS-CoV-2 Infection via Complement and Platelet-Activating Systems," in *IEEE Open Journal of Engineering in Medicine and Biology*, vol. 1, pp. 220-227, 2020, doi: 10.1109/OJEMB.2020.3014798.
13. L. Convert et al., "A Microvolumetric  $\beta$  Blood Counter for Pharmacokinetic PET Studies in Small Animals," in *IEEE Transactions on Nuclear Science*, vol. 54, no. 1, pp. 173-180, Feb. 2007, doi: 10.1109/TNS.2006.889166.
14. L. Famiglini, G. Bini, A. Carobene, A. Campagner and F. Cabitza, "Prediction of ICU admission for COVID-19 patients: a Machine Learning approach based on Complete Blood Count data," 2021 IEEE 34th International Symposium on Computer-Based Medical Systems (CBMS), 2021, pp. 160-165, doi: 10.1109/CBMS52027.2021.00065.
15. M. Danielsson, 'Assessment of preoperative red blood cell count (RBC) in patients undergoing radical cystectomy with or without neoadjuvant chemotherapy - a multicenter population based evaluation. : A retrospective multi-center study.', Dissertation, 2016.
16. M. M. Baig and H. GholamHosseini, "Wireless remote patient monitoring in older adults," 2013 35th Annual International Conference of the IEEE Engineering in Medicine and Biology Society (EMBC), 2013, pp. 2429-2432, doi: 10.1109/EMBC.2013.6610030.
17. M. V. Bills, B. T. Nguyen and J. -Y. Yoon, "Simplified White Blood Cell Differential: An Inexpensive, Smartphone- and Paper-Based Blood Cell Count," in *IEEE Sensors Journal*, vol. 19, no. 18, pp. 7822-7828, 15 Sept.15, 2019, doi: 10.1109/JSEN.2019.2920235.
18. Preethi, P., & Asokan, R. (2019). An attempt to design improved and fool proof safe distribution of personal healthcare records for cloud computing. *Mobile Networks and Applications*, 24(6), 1755-1762.
19. Preethi, P., & Asokan, R. (2021). Modelling LSUTE: PKE Schemes for Safeguarding Electronic Healthcare Records Over Cloud Communication Environment. *Wireless Personal Communications*, 117(4), 2695-2711.
20. R. Al-Qudah and C. Y. Suen, "Synthetic Blood Smears Generation Using Locality Sensitive Hashing and Deep Neural Networks," in *IEEE Access*, vol. 8, pp. 102530-102539, 2020, doi: 10.1109/ACCESS.2020.2999349.
21. R. Bhattacharyya et al., "Towards low-cost, wireless blood anomaly sensing: An RFID-based anemia detection sensor," 2015 IEEE International Conference on RFID (RFID), 2015, pp. 189-196, doi: 10.1109/RFID.2015.7113091.
22. T. Oike et al., "Comparison of hematological toxicities between innovator and generic cisplatin formulations in cervical cancer patients treated with

- concurrent chemoradiotherapy," in *Journal of Radiation Research*, vol. 54, no. 3, pp. 474-478, May 2013, doi: 10.1093/jrr/rrs121.
23. T. Rahman et al., "Development and Validation of an Early Scoring System for Prediction of Disease Severity in COVID-19 Using Complete Blood Count Parameters," in *IEEE Access*, vol. 9, pp. 120422-120441, 2021, doi: 10.1109/ACCESS.2021.3105321.
  24. T. Rahman et al., "Development and Validation of an Early Scoring System for Prediction of Disease Severity in COVID-19 Using Complete Blood Count Parameters," in *IEEE Access*, vol. 9, pp. 120422-120441, 2021, doi: 10.1109/ACCESS.2021.3105321.
  25. V. D'Silva, G. Desai, V. A. D'Silva, K. Fernandes, A. Cotta and S. Cardoso, "Prediction of Hypertension using Machine Learning," 2021 IEEE Bombay Section Signature Conference (IBSSC), 2021, pp. 1-6, doi: 10.1109/IBSSC53889.2021.9673470.
  26. V. Efremov, R. S. Lakshmanan, J. O'Donnell and A. J. Killard, "Rapid Whole Blood Clot Retraction Assay on Quartz Crystal Microbalance," in *IEEE Sensors Letters*, vol. 5, no. 1, pp. 1-4, Jan. 2021, Art no. 4500104, doi: 10.1109/LENS.2020.3049063.
  27. W. Hsu, Y. Tatsukawa, K. Neriishi, M. Yamada, J. Cologne and S. Fujiwara, "Longitudinal Trends of Total White Blood Cell and Differential White Blood Cell Counts of Atomic Bomb Survivors," in *Journal of Radiation Research*, vol. 51, no. 4, pp. 431-439, July 2010, doi: 10.1269/jrr.09081.
  28. W. Xiong et al., "Automatic Area Classification in Peripheral Blood Smears," in *IEEE Transactions on Biomedical Engineering*, vol. 57, no. 8, pp. 1982-1990, Aug. 2010, doi: 10.1109/TBME.2010.2043841.
  29. Y. Wu, M. S. Kanna, C. Liu, Y. Zhou and C. K. Chan, "Generation of Autologous Platelet-Rich Plasma by the Ultrasonic Standing Waves," in *IEEE Transactions on Biomedical Engineering*, vol. 63, no. 8, pp. 1642-1652, Aug. 2016, doi: 10.1109/TBME.2015.2449832.