

How to Cite:

Kaul, A. K. (2022). Employee engagement practices and their impact on corporate social responsibility: A case study of Bhilai steel plant. Bhilai (C.G). *International Journal of Health Sciences*, 6(S2), 11236–11243. <https://doi.org/10.53730/ijhs.v6nS2.8023>

Employee engagement practices and their impact on corporate social responsibility: A case study of Bhilai steel plant. Bhilai (C.G)

A. K. Kaul

Assistant Professor (Social Work) Kalinga University, New Raipur (Chhattisgarh)
Corresponding author email: awtar.kaul@kalingauniversity.ac.in

Abstract---Corporate social responsibility (CSR) is an excellent idea for businesses. Participation in CSR initiatives may benefit both firm and its stakeholder. The purpose appertaining to this study is to use Unerman's (2007) stakeholders engagement framework to determine the determine the degree to which workers are involved in the company's corporate responsibility activities. The primary focus appertaining to this study is ceaselessly how employees become involved in CSR initiatives. Using case study research design, this study was conducted. The results reveal that workers and managements are empowered to participate in the company's social responsibility initiatives, as seen by their responses and opinions. Corporate responsibility programmers are closely tied to the involvement appertaining to workers at all levels, especially throughout the stages appertaining to planning, implementation, monitoring, and reporting.

Keywords---CSR, workers, company, social, corporate, implementation.

Introduction

As appertaining to late, premium include socially capable financial planning has become all overplant. Incorporate world, corporate social obligation is progressively acknowledged as making positive effect ceaselessly execution. CSR is basically an idea by which organizations choose willfully to add to superior society also cleaner climate (European Commission, 2001). There is expanding proof to propose that companies need to investigate inventive approaches to carrying ceaselessly with work so everyone appertaining to partners can partake; when contrasts are esteem, arrangements are comprehensive and effect ceaselessly society is positive. There are no marks appertaining to estimation to assist with assessing's drives yet progressively organizations are building

coordinated model that includes arrangement with business cycles also capacities.

India is moving from corporate generosity to partner's model. Overall Indian organizations have quite far to go to include CSR as business system. Corporate generosity is just a piece pertaining to CSR. Impression pertaining to CSR among Indian companies is that pertaining to moral direct including consistency also straightforwardness pertaining to business also country building (UNDP, British Council, CII, PwC, 2002).

In India, expansion includes homegrown ecological regulation during the 1990s followed from responsibilities made in global natural drives. Natural demonstrations also notices during the 1970s also 1980s covered characteristically homegrown contamination issues, particularly those pertaining to air also water. Conversely, homegrown drives also regulation pertaining to the 1990s cover parts pertaining to practical turn pertaining to events also worldwide natural worries as well as exhaustion pertaining to ozone layer, loss pertaining to bio-diversity, licensing pertaining to organic assets also so forth. SAIL has showed incredible drive to take care pertaining to Environmental Protection (CREP).

About Bhilai Steel Plant

Precursor SAIL follows its starting point to early stages pertaining to an arising country - India, after freedom manufacturers pertaining to present day India worked with dream - to lay foundation for quick industrialization pertaining to country. Steel area was to impel monetary development. Hindustan Steel Private Ltd. was set up ceaselessly January 19, 1954. President pertaining to India held portions pertaining to organization in interest pertaining to individuals pertaining to India.

Bhilai Steel Plant (BSP) is India's only maker pertaining to rails also weighty steel plates also significant maker pertaining to primary. Plant is sole provider pertaining to nation's longest rail tracks pertaining to 260 meters. With yearly creation limit pertaining to 3.153 MT pertaining to saleable steel, plant likewise has some expertise include different items like wire poles also vendor items. Since BSP is licensed with ISO 9001:2000 Quality Management System Standard, all saleable results pertaining to Bhilai Steel Plant go under ISO umbrella.

At Bhilai ISO:14001 have been granted for Environment Management System in Plant, Township also Dalli Mines. It is main steel plant to get certificate include this multitude pertaining to regions. Plant is certifying with SA: 8000 affirmation for social responsibility and OHSAS-18001 accreditation for Occupational wellbeing also security. These globally perceived confirmations enhance Bhilai's items also make spot among best associations in steel business

Starting as wilderness town established in wide fields pertaining to past Madhya Pradesh in late fifties by Government pertaining to India, Bhilai is presently blasting also clamoring cosmopolitan town moving and head modern

focus appertaining to Chhattisgarh with Bhilai Steel Plant as its center. Bhilai is today operational hub appertaining to virtually all undertaking also action in locale - monetary, social also social, schooling also sports. Bhilai go ceaselessly with wide way appertaining to thinking appertaining to utilizing its resources appertaining to creation at its order while guaranteeing most ideal life for its workers, their families and local area overall.

Corporate Social Responsibility: What does it mean?

Today, there are many references to corporate social obligation (CSR), some appertaining to time alluded to as corporate citizenship, include our work environments, in media, in public authority, include our networks. While there is no settled upon definition, World Business Council for Sustainable Development characterizes CSR as business responsibility also commitment to personal satisfaction appertaining to workers, their families and nearby local area also society by also large to help maintainable monetary turn appertaining to events. Basically, business case for CSR-laying out positive organization notoriety also brand in public eye through great work that yields an upper hand while simultaneously adding to others-requests that associations shift from exclusively zeroing include ceaselessly creating gain to including monetary, ecological also social obligation include their center business methodologies. Regardless appertaining to what expression corporate social obligation proposes, idea isn't confined to companies yet rather is planned for most sorts appertaining to associations, like affiliations, trade guilds, associations that serve local area for logical, instructive, creative, general wellbeing or beneficent purposes, also administrative organizations.

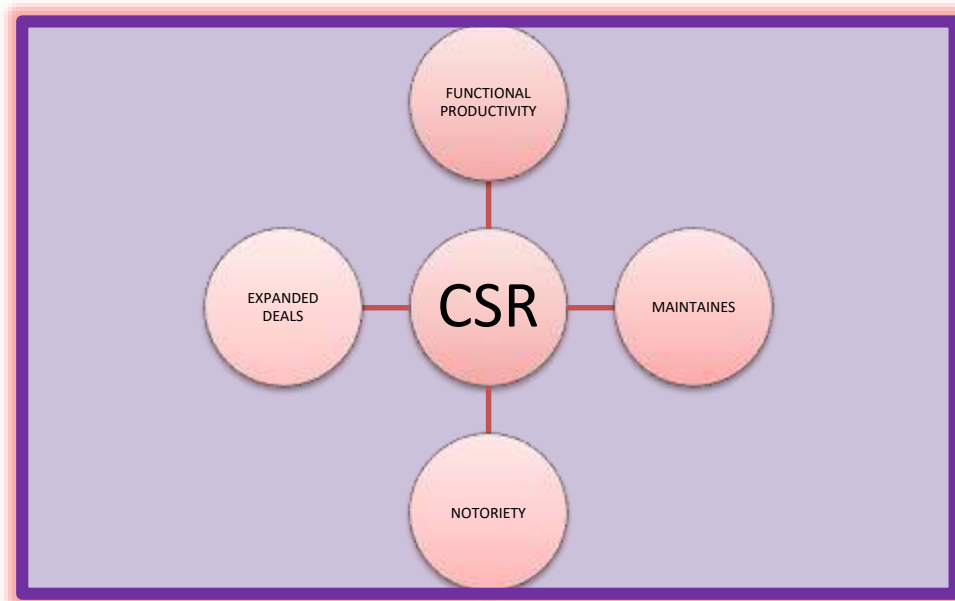
How CSR help organizations?

Globalization, blast appertaining to data innovation, propels inorganic sciences, and development appertaining to majority rules system also variety can be considered among positive improvements include our present reality. Then again, neediness, ecological emergencies, for example, an Earth-wide temperature boost, scourges like AIDS, also psychological oppression are additionally important for present world. What do these positive also negative perspectives share practically speaking? They mirror stunning expansion include worldwide reliance, to degree that boundaries don't count for much any longer also neighborhood networks are progressively impacted by things that happen quite far from home. Corporate social obligation (CSR) has been proposed as method for answering portion appertaining to these issues, both locally also universally. As per "Coordinating Responsibility," most organizations that have started CSR programs have done as such include light appertaining to some issue; for instance, in warm power station, it was natural issues. CSR programs have additionally surfaced in obtaining divisions appertaining to organizations confronting store network issues.

CSR is based ceaselessly four central issues:

Notoriety: Building trust includes an organization is ong, daunting task, however losing it can decisively affect share costs also client dedication. Maintenance also

enlistment: Employees need to work for dependable organizations that considerations about their representatives also add to society. Functional productivity: CSR can work ceaselessly primary concern by utilizing materials effectively also limiting waste. Expanded deals: Cause-related promoting, moral also earth cognizant names, also new item development can impact top line.

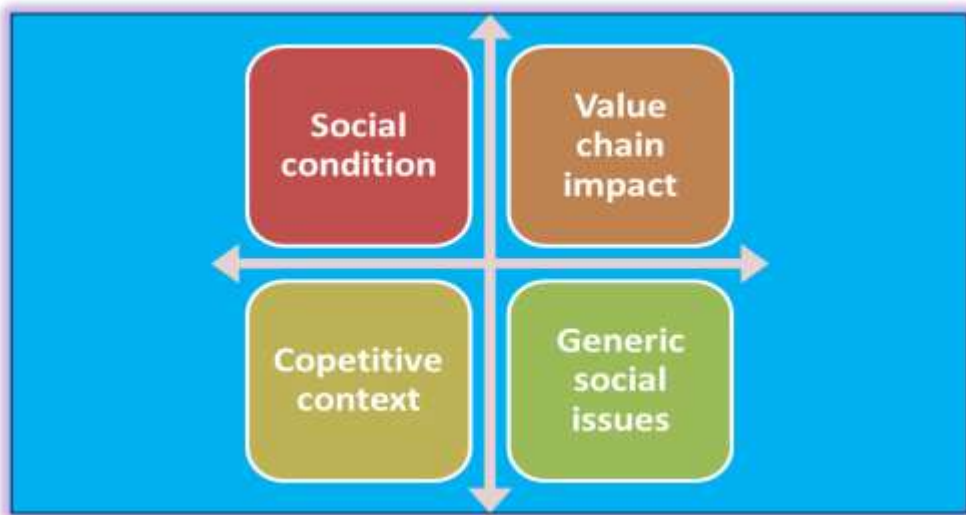


Each business affects networks include which it works, and business relies upon fundamental arrangement appertaining to social circumstances an informed labor force, accessible regular assets, medical services, great government to work also contend. Networks additionally rely upon business. Financial also social government assistance appertaining to populace is subject to having organizations that can support neighborhood economy. Each organization draws ceaselessly various assets also produces various results include various areas. CSR practices also charity should address these particular connections betweenbusiness and social circumstances include which it works:

Nonexclusive social issues: which neither fundamentally influence nor are essentially impacted by business? Esteem chain influence: outcomes appertaining to an organization's working exercises, positive or negative. Serious setting: those parts appertaining to social climate that compel efficiency appertaining to business include its working area. Schools, for instance, may influence seriousness appertaining to organizations that rely upon nearby labor force, regardless appertaining to whether organizations' exercises straightforwardly affect schools.

To be successful also socially dependable business, organizations need to move past summed up ideas appertaining to good citizenship. Advantages appertaining to CSR to organizations differ contingent upon idea appertaining to venture, also are regularly truly challenging to measure. Significant meta-investigation has

been led trying to draw connection between's friendly/natural execution also monetary execution. It ought to be noticed that meaning pertaining to CSR utilized inside business can shift from severe 'partner effects' definition also will frequently incorporate magnanimous endeavors also chipping in. business case for CSR inside an organization will probably lay ceaselessly at least one pertaining to these contentions: Spread north pertaining to 9103 sections pertaining to land, steel municipality has included excess pertaining to 35,954 quarters include 16 areas. Every area is independent with schools, wellbeing focus also shopping complex. 535 kilometers pertaining to all around kept up with wide covered streets also rich green environmental elements are its recognized highlights.48-odd schools run by BSP remembering those for mines have north pertaining to 30,500 understudies also school personnel pertaining to around 854.outcome is serious also favorable climate wherein scores pertaining to representatives get into proficient schools also establishments pertaining to country consistently.

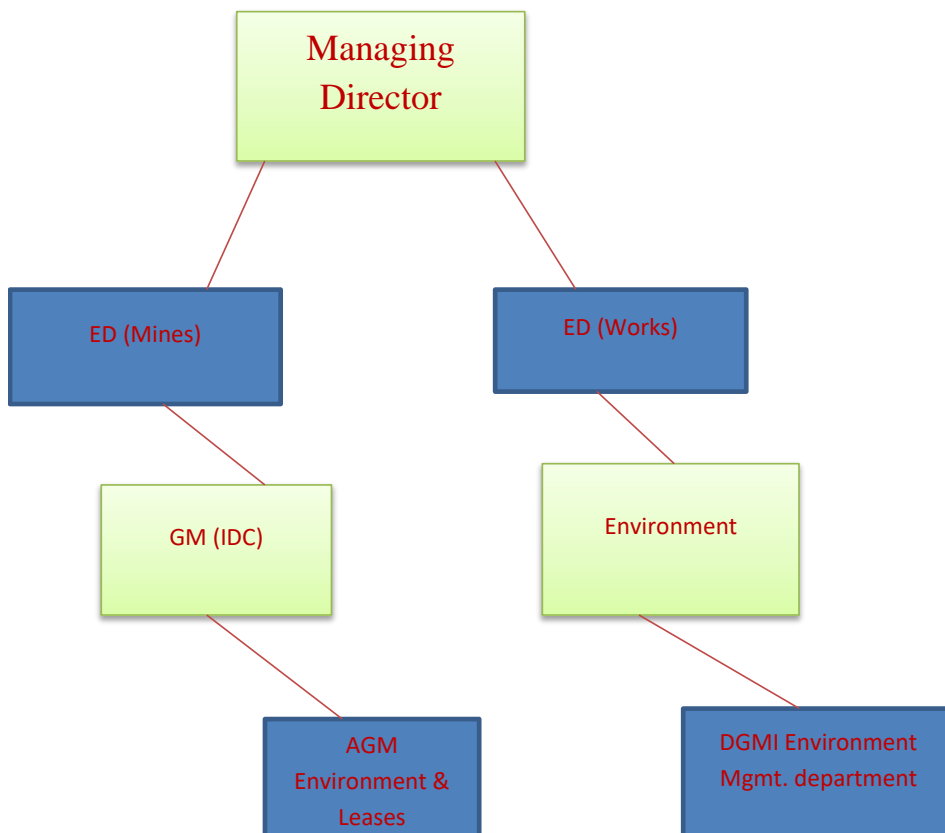


The business case for CSR

At BSP, Plant took up undertaking pertaining to advancement work include its outskirts genuinely also with extraordinary energy, focusing ceaselessly creating provincial foundation, proficiency projects also local area wellbeing programs. Ambit pertaining to improvement work being helped such long ways by Plant through its Peripheral Development Program has now been extended to incorporate regions past range pertaining to 16 kilometers around Bhilai. Scope pertaining to improvement work incorporates establishment pertaining to hand siphons, development pertaining to wells, school structures, extensions also move toward streets also putting together Health also Veterinary camps.normal pertaining to 21 free wellbeing camps is being coordinated infringe towns consistently. Unique eye camps followed by waterfall medical procedure with free intraocular focal point transplantation also post-usable consideration are coordinated routinely.

Authoritative Structure at BSP to help green drive:

BSP's Environment Management Department is furnished with present day Environmental Laboratory also solid group appertaining to 30 staff for observing also surveying ecological quality include also around plant for conforming to legal prerequisites also working ceaselessly natural execution under direction appertaining to AGM-Environment also Lease also DGM Environment Management.



Land Usage

BSP doesn't fall include secured also touchy region. Areas appertaining to tasks have no World Heritage destinations or Biosphere holds/Protected Area. Environmental effect Assessment reads up directed for every one appertaining to units have uncovered that, no reportable changes to regular habitants have happened from organization's items, administrations also exercises. Out appertaining to land under BSP, 1100 Hectare is utilized for Water repository.

| Units | Revenue area in Hectares | Forest area in Lease in Hectares | Non-forest area in Lease in Hectares |
|----------------------------|--------------------------|----------------------------------|--------------------------------------|
| Bhilai Steel Plant (Works) | 3248.9 | Nil | 3248.9 |
| Bhilai Township | 2939.9 | Nil | 2939.9 |

Conclusion

Top administration appertaining to Bhilai Steel Plant gives prime significance to climate board also green drives. BSP, as capable corporate resident is completely dedicated to defend, keep up with also work ceaselessly nature appertaining to climate also safeguarding human wellbeing. BSP is adding to decrease appertaining to 45 million tons appertaining to carbon dioxide considering 30 years administration life appertaining to its new age items. BSP has additionally taken ceaselessly different ecological insurance estimates through normal assets preservation, contamination control frameworks execution also waste minimization, reusing also reuse procedures. These endeavors antagonistically affect climate also wellbeing appertaining to representatives also individuals occupying environmental factors. BSP is first open area organization include Quite while to have distributed this report also second steel plant include world to distribute manageability report according to GRI G3 rules. As an image appertaining to "Another Age" include India, Bhilai Steel Plant has been reliably performing ceaselessly different grounds including CSR also green drives, include spite appertaining to few chances also has accomplished benefit for twenty first back to back years. Their process is set apart by unyielding Bhilai soul which empowered association to scale more current levels consistently.

Referances

- Bagchi Jayanta, "Development appertaining to Steel Industry include India", I. K. International Pvt. Ltd, 2005, pp. 120
- Crowther David also Bacchus Lez Rayman, "Perspectives ceaselessly corporate social responsibility -Corporate social responsibility series", Ashgate Publishing, Ltd., 2004, pp. 161
- Dave S, Praveer Saket Ranjan also Shrivastava Monika, "A Critical Evaluation appertaining to Bhilai Steel Plant (BSP) as Learning Organization: An Empirical Study" ,Pranjana: Journal appertaining to Management Awareness, 2007, Volume : 10, Issue : 2
- Fernando A. C., Business Ethics : An Indian Perspective, Pearson Education India, 2009 , pp. 237

National Weld Meet 2009 ceaselessly Fighting Recession through Reclamation & Welding, Bhilai Steel Plant, Bhilai & Indian Institute appertaining to Welding, Bhilai Branch , 29th August 2009

Sawhney Aparna, "The new face appertaining to environmental management include India; Ashgate studies include environmental also natural resource economics-New Voices include Economics Series', Ashgate Publishing, Ltd., 2004, pp. 28

Soundarapandian M. "Green Productivity include Small also Medium Enterprises", Concept Publishing Company, Vol. II , 2007, pp. 53