

How to Cite:

Yuvabalakumaran, G., Ram, K. R., Sidhesh, R. M., Kumar, S., & Divya, K. (2022). Evaluation of stiffness of rotator cuff tendons, coracohumeral ligament, tendon of long head of biceps and posterior capsule by strain and shear wave elastography in frozen shoulder vs normal shoulder. *International Journal of Health Sciences*, 6(S4), 6627–6639. <https://doi.org/10.53730/ijhs.v6nS4.9841>

Evaluation of stiffness of rotator cuff tendons, coracohumeral ligament, tendon of long head of biceps and posterior capsule by strain and shear wave elastography in frozen shoulder vs normal shoulder

Dr. G. Yuvabalakumaran

Professor, Department of Radiodiagnosis, Vinayaka Missions Kirupananda Variyar Medical College and Hospital, Salem

Dr. K. Raja Ram

Radiology, Resident, Department of Radiodiagnosis, Vinayaka Missions Kirupananda Variyar Medical College and Hospital, Salem
Corresponding author email: drdivyak21@gmail.com

Dr. R. M. Sidhesh

Assistant Professor, Department of Radiodiagnosis, Vinayaka Missions Kirupananda Variyar Medical College and Hospital, Salem

Dr. Sanal Kumar

Radiology Resident, Department of Radiodiagnosis, Vinayaka Missions Kirupananda Variyar Medical College and Hospital, Salem

Dr. K. Divya

Radiology Resident, Department of Radiodiagnosis, Vinayaka Missions Kirupananda Variyar Medical College and Hospital, Salem

Abstract---Background: Frozen shoulder is an idiopathic condition which presents with the loss of both active and passive movement at the shoulder joint over a period of time, associated with pain on movement. The wide range of clinical conditions with similar symptoms make the diagnosis difficult, hence making imaging studies mandatory. An increase in stiffness is noted by shear wave and strain ultrasound elastography of rotator cuff tendons, coracohumeral ligament, tendon of long head of biceps, posteriorcapsuleina patient affected with frozen shoulder. Objectives: To evaluate the stiffness of rotator cuff tendons,

coracohumeral ligament, tendon of long head of biceps and posterior capsule in frozen shoulder by strain elastography and shear wave elastography and compare it with normal shoulder. **Materials and Methods:** The study was conducted with twenty-nine patients with frozen shoulder. Limited and painful motion without tendinitis or tendon tears were considered. Inclusion criteria. Strain and shear wave elastography were performed on rotator cuff tendons, coracohumer alligament, tendon of long head of biceps and posterior capsule on affected side and normal side to assess and compare the strain ratios and stiffness values on both sides. Receiver operating characteristic curve was plotted for the obtained values. **Results:** The strain ratios for rotator cuff tendons and coracohumer alligament were significantly lower on affected shoulder 0.16 compared to normal shoulder of 0.21. The stiffness values for rotator cuff tendons and coracohumeral ligament were significantly higher on affected shoulder compared to normal shoulder ($p < 0.001$). **Conclusion:** The stiffness values of supraspinatus, infraspinatus and coracohumeral ligament are higher in strain elastography and shear wave elastography in frozen shoulder compared to normal shoulder.

Keywords---stiffness, thickness, strain ratio, acoustic force, tendinitis.

Introduction

Frozen shoulder is an idiopathic condition which presents with the loss of both active and passive movement at the shoulder joint over a period of time, associated with pain on movement [1]. With the cause being unclear, underlying mechanism for this condition is thought to be due to inflammation of the synovium and joint capsule fibrosis [2]. With a distribution of 2–5 % in the population, most affected age group is 40 years and beyond, with women being affected slightly more than men [3].

Frozen shoulder is clinically confirmed when there is pain and restricted movement of the shoulder both actively and passively for more than 3 months, without any obvious causes [4]. The wide range of clinical conditions with similar symptoms make the diagnosis difficult, hence making imaging studies mandatory [5]. Few studies have documented changes in rotator cuff tendons, long head of biceps [6], capsule [7], coracohumeral ligament [8]. Ultrasound is useful in patients presenting with frozen shoulder [5]. Yet, B-mode ultrasound technique has many drawbacks due to its limited scope and the small details imaged in our study. A number of studies performed on Achilles tendon and common extensor tendon show that Shear wave US elastography and Strain US elastography techniques are more efficient than conventional ultrasound for tendon studies [9, 10].

Many elastography studies have been performed on tendons around shoulder in various clinical settings. To our knowledge, no studies have compared the shear

wave and strain ultrasound elastography values in supraspinatus tendon, infraspinatus tendon, coracohumeral ligament, posterior capsule and long head of biceps tendon of frozen shoulder with normal shoulder. Our hypothesis states that there is an increase in stiffness noted by shear wave and strain ultrasound elastography of rotator cuff tendons, coracohumeral ligament, tendon of long head of biceps, posterior capsule in a patient affected with frozen shoulder. Hence, the objective of this study is to evaluate the stiffness of rotator cuff tendons, coracohumeral ligament, tendon of long head of biceps and posterior capsule in frozen shoulder by strain elastography and shear wave elastography and compare it with normal shoulder.

Materials and Methods

A cross sectional study was conducted from June 2021 to September 2021 on 34 patients. The patients had restricted shoulder movement both actively and passively, with normal radiographic features. Our institutional review board approved the study and informed consent was taken from each patient. As per previous studies, restriction of motion was limited to 100 degrees in forward flexion, 10 degrees in external rotation, up to L 5 level in internal rotation [11]. Cases were referred from the orthopaedic department based on clinical history and examination followed by normal findings on radiographs.

Inclusion criteria for frozen shoulder cases were 1) Shoulder pain for past 6 months, 2) Restriction of both active and passive movements at shoulder joint associated with pain for past 6 months, 3) Age of 40 and above.

Exclusion criteria for frozen shoulder cases were 1) Pathologies like fracture, inflammation, impingement, 2) Age below 40 years, 3) History of trauma.

Out of total 34 patients 5 did not meet the inclusion criteria with 3 patients having rotator cuff tear and 2 patients having nerve impingement. 29 patients were included and underwent shear wave and strain ultrasound elastography of the mentioned tendons, ligament and capsule, with the opposite unaffected shoulder considered as control.

An ultrasound machine (LOGIQ E9, GE HEALTHCARE) was used to perform shearwave and strain US elastography by a radiologist with 4 years of experience in musculoskeletal ultrasound. Ultrasound was done with the patients sitting with the arm in resting position with no abduction or rotation. The transducer was aligned along the fibers of the supraspinatus tendon, infraspinatus tendon, tendon of long head of biceps, coracohumeral ligament and posterior capsule for ultrasound and elastography measurements of these structures. Internal rotation of the arm by 30 degrees was required for elastography measurement of posterior capsule.

To have a clear demarcation from capsule, the region of interest was selected in the superficial portions of supraspinatus and infraspinatus tendons. Due to the unclear boundary between supraspinatus and infraspinatus tendons, stiffness measurements were taken from anterior to mid part of supraspinatus tendon and mid to posterior part of infraspinatus tendon. A region of interest was placed on the tendons, 1 cm away from greater tuberosity for measuring stiffness in shear

wave US. The ROI measured 0.09 mm². The mean stiffness values were measured. Two regions of interest were set for strain elastography with one in the tendon and other in subcutaneous fat for measurement of strain ratio (SR= strain ratio of subcutaneous fat/strain of the tendon). The stiffness range for shear wave US elastography was 0 – 600 kPa while the range for strain ratio was 0 - 1. All measurements were taken 3 times and mean was considered. A region 2 mm away from coracoid process was used to measure the thickness of coracohumeral ligament, while a region 5 mm from glenoid labrum was used to measure the thickness of posterior capsule.

Statistical Analysis

All the data obtained through the study were statistically analyzed using the Statistical Package for Social Science (SPSS, version 22).

1. Mann-Whitney tests were used to analyze stiffness and strain ratios;
2. Receiver operating characteristic curve was used for determining the cut-off values for stiffness and strain ratios. Area under the receiver operating characteristic curve was also calculated.

Probability (p) values of less than or equal to 0.05 was taken as statistically significant.

Results

The study group consisted of 29 patients with a mean age of 53.7 ± 19.7years (40 – 69 years range), comprising of 11 male and 18 female patients.

Table-1. Shear wave elastography values in frozen shoulder and normal shoulder

Shear wave elastography (mean kPa)	Frozen shoulder	Normal shoulder
Supraspinatus tendon	198.1±42.1	129.9±34.9
Infraspinatus tendon	226.5±62.6	158.6±38.2
Coracohumeral ligament	227.2±59.6	168.3±39.3
Long head of biceps	171.6±40.9	159.4±39.9
Posterior capsule	82.1±22.9	71.5±12.4

Table-2. Strain elastography values in frozen shoulder and normal shoulder

Strain elastography (mean ratio)	Frozen shoulder	Normal shoulder	P-Values
Supraspinatus tendon	0.18	0.24	<0.0001*
Infraspinatus tendon	0.15	0.22	<0.0001*
Coracohumeral ligament	0.16	0.21	<0.0001*
Long head of biceps	0.20	0.21	0.028
Posterior capsule	0.29	0.30	0.028

The mean values of shear wave and strain elastography are shown (Table 1 and Table 2.). The supraspinatus tendon, infraspinatus tendon and coracohumeral ligament showed significantly higher mean stiffness values in the symptomatic

shoulder than the unaffected shoulder in shear wave elastography ($p < 0.05$). The strain ratios of supraspinatus tendon, infraspinatus tendon and coracohumeral ligament were significantly lower on affected side than on the unaffected side ($p < 0.05$).

With an increase in stiffness of tissue, the color in shear wave elastography changed from blue to green, yellow and red, while strain elastography conversely showed a change in color from red to yellow, green and blue with an increase in stiffness of tissue. The rotator cuff tendons and coracohumeral ligament showed mostly blue color on unaffected side and mostly yellow to red color on the affected side on shear wave elastography. On strain elastography, they showed mostly red to yellow color on unaffected side and mostly green to blue color on affected side (Table 3, Fig 1(A)(B), Fig 2 (A)(B)).

Table-3. Thickness measurements on conventional ultrasound

Region (mean thickness)	Frozen shoulder	Normal shoulder
Coracohumeral ligament	4.1±1.3	3.5±0.9
Posterior capsule	1.3±0.5	1.0±0.6

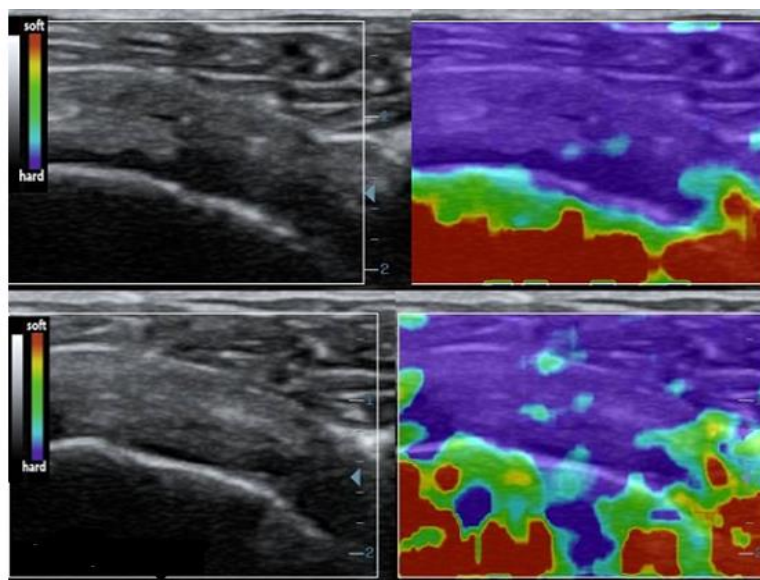


Figure-1-A

Figure 1. Elastography images as seen in (A) Strain elastography of supraspinatus tendon on right side in frozen shoulder (upper) and normal shoulder (lower). The supraspinatus tendon appears blue to green on affected side indicating higher stiffness and red to yellow on unaffected side indicating lower stiffness. (B) Shear wave elastography of supraspinatus tendon on right side in frozen shoulder (upper) and normal shoulder (lower). The supraspinatus tendon appears red to yellow on affected side indicating higher stiffness and blue to green on unaffected side indicating lower stiffness.

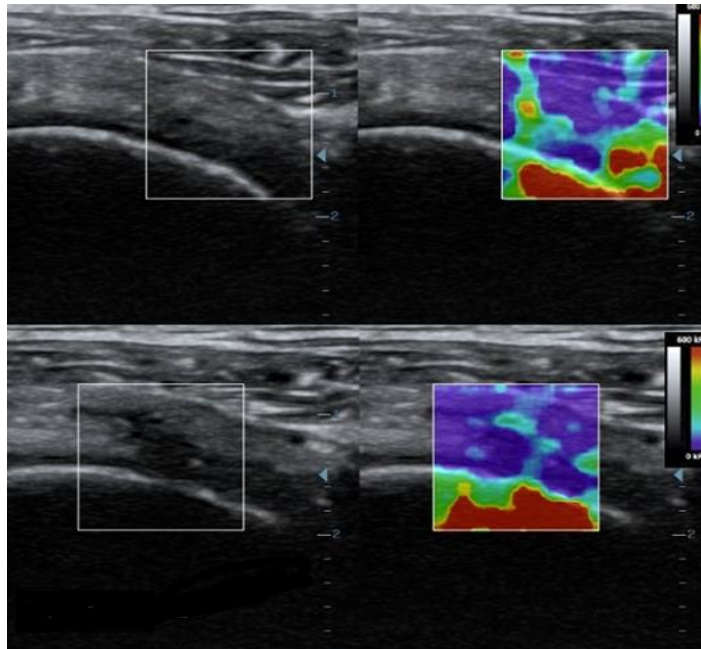


Figure-1-B

Figure 2. Elastography images as seen in (A) Strain elastography of infraspinatus tendon on right side in frozen shoulder (upper) and normal shoulder (lower). The infraspinatus tendon appears blue to green on affected side indicating higher stiffness and red to yellow on unaffected side indicating lower stiffness. (B) Shear wave elastography of infraspinatus tendon on right side in frozen shoulder (upper) and normal shoulder (lower). The infraspinatus tendon appears red to yellow on affected side indicating higher stiffness and blue to green on unaffected side indicating lower stiffness.

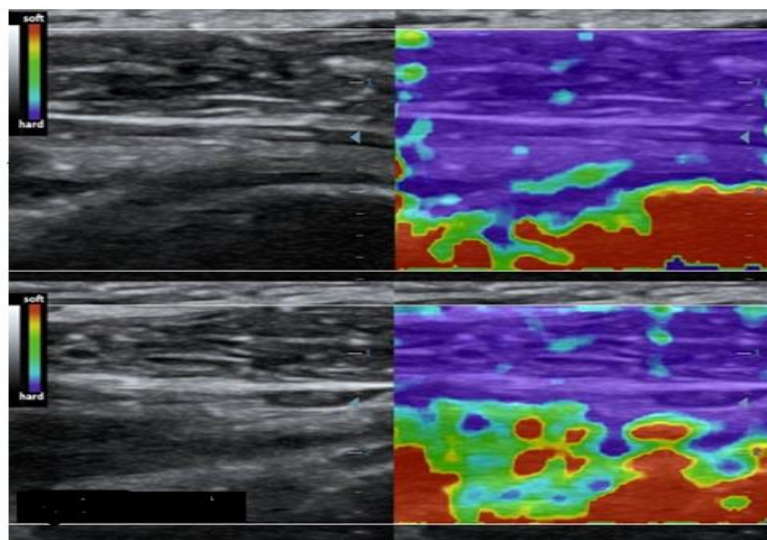


Figure-2-A

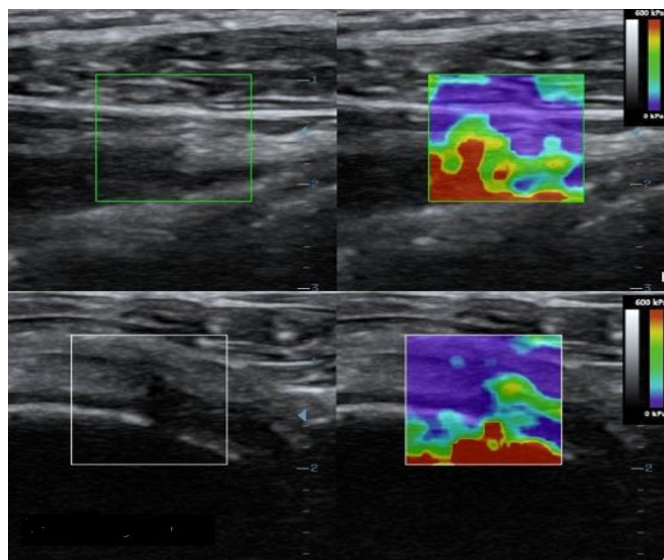


Figure-2-B

On B-mode US, the thickness of coracohumeral ligament had a mean value of 4.1 mm on the affected side and 3.5 mm on the normal side. The thickness of posterior capsule had a mean value of 1.3 mm on the affected side and 1.0 on the normal side. The coracohumeral ligament and posterior capsule showed higher thickness values in the frozen shoulder compared to normal shoulder ($p < 0.05$) (Fig 3(A)(B))

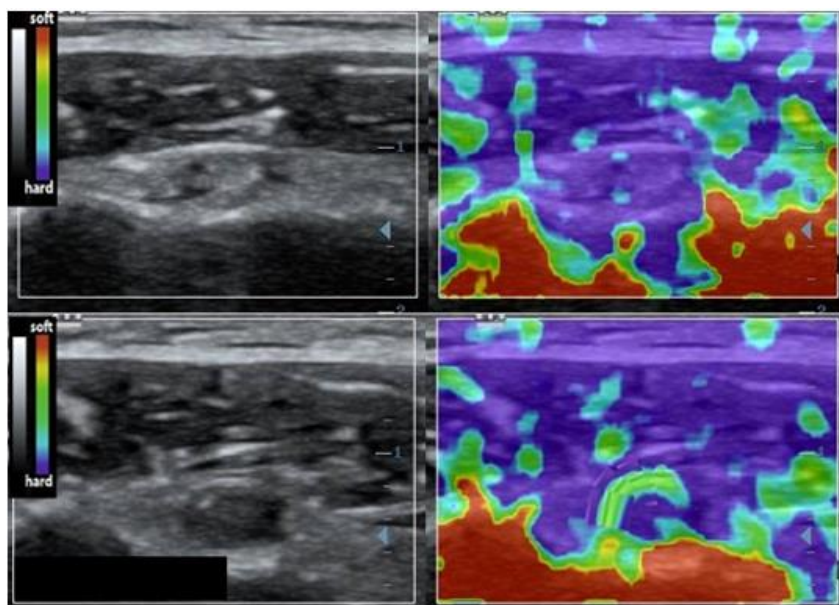


Figure-3-A

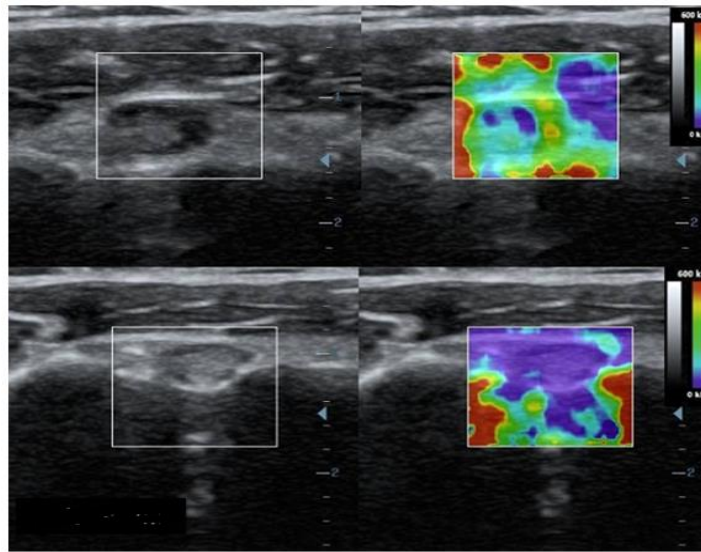


Figure-3-B

Figure 3. Elastography images as seen in (A) Strain elastography of coracohumeral ligament on right side in frozen shoulder (upper) and normal shoulder (lower). The coracohumeral ligament appears blue to green on affected side indicating higher stiffness and red to yellow on unaffected side indicating lower stiffness. (B) Shear wave elastography of coracohumeral ligament on right side in frozen shoulder (upper) and normal shoulder (lower). The coracohumeral ligament appears red to yellow on affected side indicating higher stiffness and blue to green on unaffected side indicating lower stiffness.

Table-4. Diagnostic parameters on shear wave elastography mean values

Shear wave elastography	Cutoff(kPa)	AUC	Sensitivity(%)	Specificity(%)	PLR	NLR
Supraspinatus tendon	148.2	0.832	82.4	100	NA	0.176
Infraspinatus tendon	176.8	0.861	85.2	100	NA	0.148
Coracohumeral ligament	184.7	0.805	78.0	100	NA	0.22
Long head of biceps	164.3	0.582	56.7	100	NA	0.433
Posterior capsule	75.6	0.563	53.8	100	NA	0.462

AUC=Area under receiver operating characteristic curvature, PLR= Positive likelihood ratio, NLR= Negative likelihood ratio

Table-5. Diagnostic parameters on strain elastography mean values

Strain elastography	Cutoff(strain ratio)	AUC	Sensitivity(%)	Specificity(%)	PLR	NLR
Supraspinatus	0.208	0.848	80.6	100	NA	0.194

tendon						
Infraspinatus tendon	0.174	0.872	82.1	100	NA	0.179
Coracohumeral ligament	0.183	0.813	75.4	100	NA	0.246
Long head of biceps	0.207	0.596	61.2	100	NA	0.398
Posterior capsule	0.296	0.581	57.8	100	NA	0.422

AUC=Area under receiver operating characteristic curvature, PLR= Positive likelihood ratio, NLR= Negative likelihood ratio

The optimal cutoff values were calculated using ROC curve (Table 4 and Table 5) The mean stiffness values on shear wave elastography and strain ratios on strain elastography of supraspinatus tendon, infraspinatus tendon, coracohumeral ligament showed high area under curvature.

Discussion

Ultrasonography is the primary investigation preferred over MRI in cases of shoulder pain evolving insidiously, as it is less expensive as a primary investigation [12]. Ultrasound elastography has increased the scope of ultrasound from Gray scale and dynamic imaging to measurement of mechanical properties like stiffness of tissues [9]. In shear wave US elastography, an applied acoustic force causes shear waves to be produced whose velocity is measured which provides an indirect quantitative measure of tissue stiffness [13, 14]. Strain elastography displays the ratio between tissue strains (subcutaneous tissue/ tendon) produced due to manual compression with transducer and is a semiquantitative method showing lower strain ratio in stiffer tissues [13]. Increased stiffness of tendons was associated with degeneration of rotator cuff tendons in a study conducted on animal model by Morikawa et al [15]. Krepkin et al [16] noted an increase in shear wave elastography values in degenerated supraspinatus tendons. An increase in stiffness of degenerated rotator cuff tendons was noted in the above studies. In our study, elastography values of rotator cuff tendons and coracohumeral ligament were higher in the frozen shoulder compared to the normal shoulder. Our results are in favour of our hypothesis. A proposed mechanism for pathogenesis states that increased stiffness is due to decreased glycosaminoglycans, hyaluronic acid, water content in the tendons which in turn is due to joint immobilization [17]. A study performed on animal model concluded that shortening and hence higher strain of a tendon around an immobilized joint is due to higher tension in tendon due to muscle contraction adapted to the new resting position [18]. While most shoulder diseases like rotator cuff tears or shoulder impingement show decreased stiffness of the tendons [19,20], frozen shoulder is associated with increased stiffness of the tendons. Hence, we used elastography values of these tendons as an indirect indicator for frozen shoulder. The coracohumeral ligament showed increased thickness and stiffness in the frozen shoulder. A study by Mengiardi et al [21] used MR arthrography to conclude that coracohumeral ligament was thickened in frozen shoulder. A study by Homsy et al [8] used B-mode ultrasound to conclude that coracohumeral ligament was thickened in frozen shoulder.

In a study by Wu et al [22], using shear wave elastography, elastic modulus of coracohumeral ligament was reported to be higher on the affected side than the normal side. The results of these studies are in coherence with results of our study. In frozen shoulder, capsular fibrosis is associated with synovitis and inflammation of the whole capsule [7, 23]. One study showed thickened inferior capsule [24] while other studies showed thickened rotator interval and axillary pouch. Our study showed a thickened posterior capsule in frozen shoulder, consistent with the findings of previous studies[21, 25].

Table-6 Previous studies on ultrasound and ultrasound elastography in shoulder

Author	Year	Ultrasound method	Inference
Homsy C	2006	Ultrasound	Increased thickness of coracohumeral ligament is suggestive of frozen shoulder.
Schmalzl J	2017	Shear wave elastography, Strain elastography	Ultrasound elastography can be used for screening, monitoring of effects of new treatments, cost effective follow up examination in tendon injuries.
Taljanovic MS	2017	Continuous wave elastography, 3D shear wave elastography, 2D shear wave elastography	Continuous-wave and 3dimensional shear wave elastography along with 2 dimensional shear wave elastography help in early disease diagnosis of musculoskeletal soft tissues.
Krepkin K	2016	Shear wave elastography, MRI	T2* values and shear wave velocity values showed a correlation in the supraspinatus tendon while evaluating the tendons of rotator cuff.
Lee SU	2016	Strain elastography, MRI	Stiffness values in strain elastography showed association with tendinosis grade in MRI in patients with tendinopathy.
Tudisco C	2015		
Wu CH	2016	Strain elastography	Shear wave elastography is a useful method in assessment of small supraspinatus tears.
		Shear wave elastography	Shear wave elastography showed higher stiffness values in
Michelin P	2013		coracohumeral ligament in

		Ultrasound	<p>symptomatic patients of frozen shoulder compared to normal shoulders.</p> <p>The inferior glenohumeral capsule appears thickened on ultrasound in patients with contracture of the capsule.</p>
--	--	------------	--

A study by Moet al [26] concluded that stiffness of thin layers could not be measured properly as the speed of shear wave is less in thin tissues. Stiffness of posterior capsule could not be measured properly in our study as the capsule was thinner than the spatial resolution of the machine.

Rotator cuff tendons and coracohumeral ligament in patients with frozen shoulder showed higher stiffness values on shear wave elastography and lower strain ratios on strain elastography as compared to controls. The posterior capsule and coracohumeral ligament were thicker in frozen shoulder as compared to controls. The elastography of rotator cuff tendons and thickness of coracohumeral ligament and posterior capsule may be used as a radiological correlation for confirming frozen shoulder.

Limitations

Our study has many limitations. First, this study did not include degenerative changes around the shoulder, which is a very common finding in middle age group, which is our study population. Including patients with degenerative changes around shoulder would make the study more practicable. Second, the sample size selected was small. A bigger sample size would get better results. Third, being a cross sectional study, intraobserver agreement could not be evaluated. This should be evaluated in a future study. Fourth, the various phases of adhesive capsulitis of shoulder like freezing, frozen and thawing phase were not taken into account. A study considering these phases can better delineate changes in stiffness during each phase. Finally, the control used was the opposite shoulder presumed to be normal by ruling out adhesive capsulitis of shoulder after thorough clinical examination. Studies have showed that bilateral involvement is seen in 14% of frozen shoulder cases. A study having unaffected patients as controls can be done in future.

Conclusion

The stiffness values of supraspinatus, infraspinatus and coracohumeral ligament are higher in strain elastography and shear wave elastography in frozen shoulder compared to normal shoulder.

References

1. Zuckerman JD, Rokito A. Frozen shoulder: a consensus definition. *J Shoulder Elbow Surg* 2011;20:322-325

2. Hsu JE, Anakwenze OA, Warrender WJ, Abboud JA. Current review of adhesive capsulitis. *J Shoulder Elbow Surg* 2011;20:502-514
3. Harris G, Bou-Haidar P, Harris C. Adhesive capsulitis: review of imaging and treatment. *J Med Imaging Radiat Oncology* 2013;57:633-643
4. Brue S, Valentin A, Forssblad M, Werner S, Mikkelsen C, Cerulli G. Idiopathic adhesive capsulitis of the shoulder: a review. *Knee Surg Sports Traumatol Arthrosc* 2007;15:1048-1054
5. Zappia M, Di Pietto F, Aliprandi A, Pozza S, De Petro P, Muda A, et al. Multi-modal imaging of adhesive capsulitis of the shoulder. *Insights Imaging* 2016;7:365-371
6. Macnab I. Rotator cuff tendinitis. *Ann R Coll Surg Engl* 1973; 53: 271-287.
7. Rodeo SA, Hannafin JA, Tom J, Warren RF, Wickiewicz TL. Immunolocalization of cytokines and their receptors in adhesive capsulitis of the shoulder. *J Orthop Res* 1997; 15:427-436.
8. Homsí C, Bordalo-Rodrigues M, da Silva JJ, Stump XM. Ultrasound in adhesive capsulitis of the shoulder: is assessment of the coracohumeral ligament a valuable diagnostic tool? *Skeletal Radiol* 2006; 35:673-678.
9. Ooi CC, Malliaras P, Schneider ME, Connell DA. "Soft, hard, or just right?" Applications and limitations of axial strain sonoelastography and shear-wave elastography in the assessment of tendon injuries. *Skeletal Radiol* 2014;43:1-12
10. Pedersen M, Fredberg U, Langberg H. Sonoelastography as a diagnostic tool in the assessment of musculoskeletal alterations: a systematic review. *Ultraschall Med* 2012;33:441- 446
11. Itoi E, Arce G, Bain GI, et al. Shoulder stiffness: current concepts and concerns. *Arthroscopy* 2016; 32:1402-1414.
12. Tuite MJ, Small KM. Imaging evaluation of nonacute shoulder pain. *AJR Am J Roentgenol* 2017;209:525-533
13. Schmalzl J, Fenwick A, Boehm D, Gilbert F. The application of ultrasound elastography in the shoulder. *J Shoulder Elbow Surg* 2017;26:2236-2246
14. Taljanovic MS, Gimber LH, Becker GW, Latt LD, Klauser AS, Melville DM, et al. Shear-wave elastography: basic physics and musculoskeletal applications. *Radiographics* 2017;37:855-870
15. Morikawa D, Itoigawa Y, Nojiri H, et al. Contribution of oxidative stress to the degeneration of rotator cuff entheses. *J Shoulder Elbow Surg* 2014; 23:628-635.
16. Krepkin K, Bruno M, Raya JG, Adler RS, Gyftopoulos S. Quantitative assessment of the supraspinatus tendon on MRI using T2/T2* mapping and shear-wave ultrasound elastography: a pilot study. *Skeletal Radiol* 2016; 46:191-199.
17. Yasuda K, Hayashi K. Changes in biomechanical properties of tendons and ligaments from joint disuse. *Osteoarthritis Cartilage* 1999;7:122-129
18. Herbert RD, Crosbie J. Rest length and compliance of nonimmobilised and immobilised rabbit soleus muscle and tendon. *Eur J Appl Physiol Occup Physiol* 1997;76:472-479
19. Lee SU, Joo SY, Kim SK, Lee SH, Park SR, Jeong C. Realtime sonoelastography in the diagnosis of rotator cuff tendinopathy. *J Shoulder Elbow Surg* 2016;25:723-729
20. Tudisco C, Bisicchia S, Stefanini M, Antonicoli M, Masala S, Simonetti G. Tendon quality in small unilateral supraspinatus tendon tears. Real-time

- sonoelastography correlates with clinical findings. *Knee Surg Sports TraumatolArthrosc*2015;23:393-398
21. Mengiardi B, Pfirrmann CW, Gerber C, Hodler J, Zanetti M. Frozen shoulder: MR arthrographic findings. *Radiology* 2004; 233: 486–492.
 22. Wu CH, Chen WS, Wang TG. Elasticity of the coracohumeral ligament in patients with adhesive capsulitis of the shoulder. *Radiology* 2016; 278:458–464.
 23. Neviasser AS, Hannafin JA. Adhesive capsulitis: a review of current treatment. *Am J Sports Med* 2010; 38:2346 2356.
 24. Michelin P, Delarue Y, Duparc F, Dacher JN. Thickening of the inferior glenohumeral capsule: an ultrasound sign for shoulder capsular contracture. *Eur Radiol* 2013; 23:2802–2806
 25. Eming EW, Schweitzer ME, Karasick D, Lubowitz J. Adhesive capsulitis of the shoulder: MR diagnosis. *AJR Am J Roentgenol* 1995; 164:1457–1459.
 26. Mo J, Xu H, Qiang B, et al. Bias of shear wave elasticity measurements in thin layer samples and a simple correction strategy. *Springerplus* 2016; 5:1341.
 27. Herman, H., Ardani, I. G. A. I., Aryani, L. N. A., Windiani, I. G. A. T., Adnyana, I. G. N. S., & Setiawati, Y. (2022). Signs and symptoms of depression in children and adolescents with type 1 diabetes mellitus: A case report. *International Journal of Health & Medical Sciences*, 5(1), 150-153. <https://doi.org/10.21744/ijhms.v5n1.1861>
 28. Suryasa, I. W., Rodríguez-Gámez, M., & Koldoris, T. (2021). Health and treatment of diabetes mellitus. *International Journal of Health Sciences*, 5(1), i-v. <https://doi.org/10.53730/ijhs.v5n1.2864>